

Alki Tours Presents: Rail to Oktoberfest in Leavenworth & Mazama

October 1st-3rd, 2010

Day One: Seattle to Leavenworth by rail

A weekend out riotous fun begins as we board the Amtrak's Empire Builder for a scenic rail trip through the Cascade Mountains to Bavarian Leavenworth. Spend a wonderful night in Leavenworth and get ready for the big festival.

Meals: All meals on own

Day Two: Leavenworth to Mazama

In the morning after breakfast we'll head into town to enjoy Oktoberfest. At noon there will be an Oktoberfest procession with Enzian Alpine Horns, dancers, horses and Bierwangen! Lederhosen accentuates the enormity of the band's bellies as they rally the crowd to sing "Ein Mass"-one more beer. Next, we'll head out of town to visit famed Smoke Jumpers, considered the most skilled fire fighters in the U.S. Tour the facility while listening to thrilling stories about their life-threatening jobs. After, we'll check into the Mazama Resort for an overnight stay. The lodge has won a fistful of awards for its guest rooms, cuisine and world-class wine list.

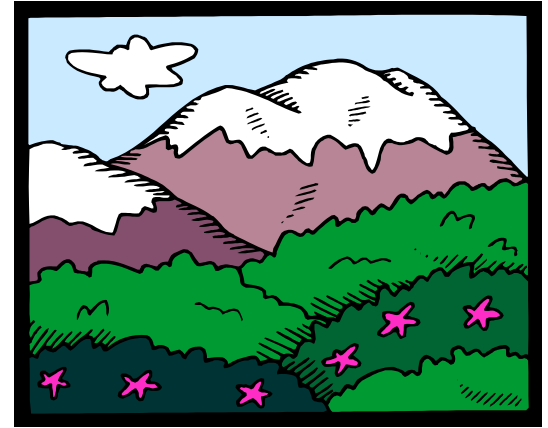
Meals: Breakfast,

Day Three: Mazama to Seattle

Take the morning to enjoy the resort before boarding our coach bound for Seattle. Outside their doors you'll find half a million acres of virgin timberland and mountains that reach all the way to Canada. So if you're looking for a wide variety of recreational activities, or just a respite from the stresses of modern civilization, you'll find what you're looking for at our Inn. Next, we'll head over the gorgeous North Cascade Highway and make our way back into Seattle. Welcome home!

Meals: Breakfast

Welcome Home!



!

Its Included:

Motorcoach transportation
Rail from Seattle to Leavenworth onboard the Amtrak's Empire Builder
Oktoberfest entrance fees
Overnight hotel at the Sleeping Lady Resort
Overnight hotel at the Mazama Inn
Baggage handling
2 Breakfast
Smoked Jumpers
Fully escorted and narrated so you don't miss a thing



\$399^{PP/DO}

\$99 Single supplement

To book this tour please call
Alki Tours 1-800-895-2554 or
www.alkitours.com

A deposit of \$100 is due 2 weeks after booking.
Full payment is due 60 days prior to tour. Please make checks payable to:

ALKI TOURS
6417-A Fauntleroy Way SW
Seattle, WA 98136

Cancellation Policy:

Full refund 60 days prior to tour
75% refund 59-41 days prior to tour
50% refund 40-21 days prior to tour
25% refund 20-7 days prior to tour
No refund 6 days to tour.

There is no refund for any unused portion of the tour once the tour has started