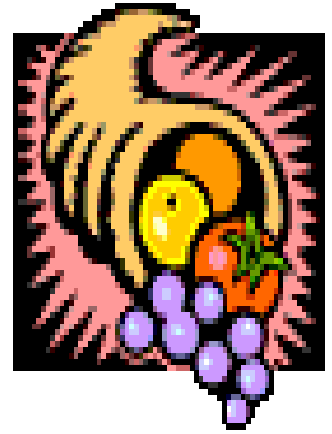


Alki Tours Presents: Rail to Skamania Resort for Thanksgiving November 25th-26th, 2010/2 Days



Thursday, November 25th, 2010- Day 1:

All Aboard! Sit back, relax and enjoy the scenery as we depart on Amtrak's *Cascade* Service down to Vancouver, Washington. The bistro car will be open on the train for an included lunch.

Upon arrival in Vancouver we will board our deluxe motorcoach for a scenic drive to the Columbia Gorge, and pass the largest concentration of high waterfalls in the nation. Get your cameras ready as we make a brief stop at Multnomah Falls.

Then we will depart for our hotel, the **Skamania Lodge**. Our arrival time to the hotel is approx. 2:00 PM, prior to check-in time. Take time this afternoon to enjoy the lodge and it's many amenities.

Sit down to a fabulous Thanksgiving Dinner with your tour director and fellow traveling companions. Following dinner, enjoy the remainder of the evening on your own.

Meals included: Lunch & dinner.

Friday, November 26th, 2010- Day 2:

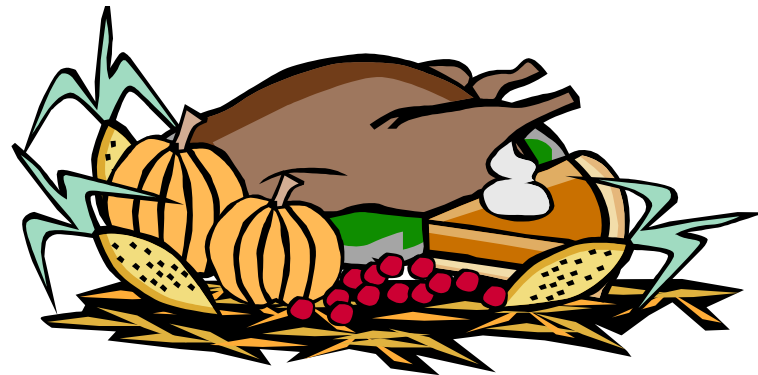
Good Morning! A continental breakfast will be served in the lounge including coffee, tea, fresh juice, hot chocolate, fresh fruit & berries, assorted breakfast breads with fruit preserves. We will then depart Skamania Lodge for a tour of Bonneville Dam.

In the afternoon we'll depart Vancouver, Washington aboard Amtrak for Seattle. You may enjoy a light snack in the bistro car during our journey north. Arrive at King Street Station in downtown Seattle. Upon arrival, we will transfer you back to your original pickup location.

Meals included: Continental breakfast

Its Included:

- Round-trip train transportation to Vancouver
- Deluxe motorcoach transportation
- 1 Night at the Skamania Resort
- Sightseeing along the Columbia Gorge
- Thanksgiving Dinner
- 1 Breakfast
- Tour of the Bonneville Dam



\$299

 PP/DO

\$95 Single supplement

To book this tour please call
Alki Tours 1-800-895-2554 or
www.alkitours.com

A deposit of \$75 is due 2 weeks after booking. Full payment is due 60 days prior to tour. Please make checks payable to:

ALKI TOURS
6417-A Fauntleroy Way SW
Seattle, WA 98136

Cancellation Policy:

Full refund 60 days prior to tour
75% refund 59-41 days prior to tour
50% refund 40-21 days prior to tour
25% refund 20-7 days prior to tour
No refund 6 days prior to tour.

There is no refund for any unused portion of tour once the tour has started